

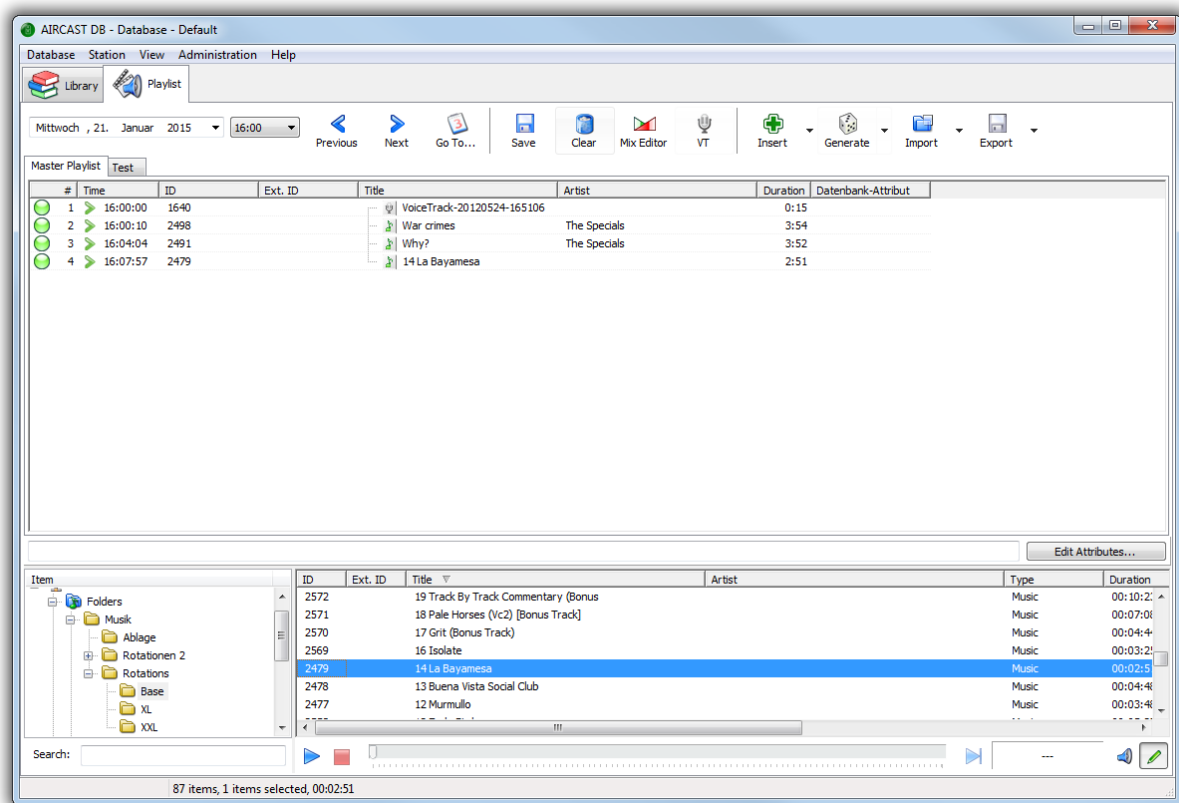
# How to manage more than one station in AIRCAST

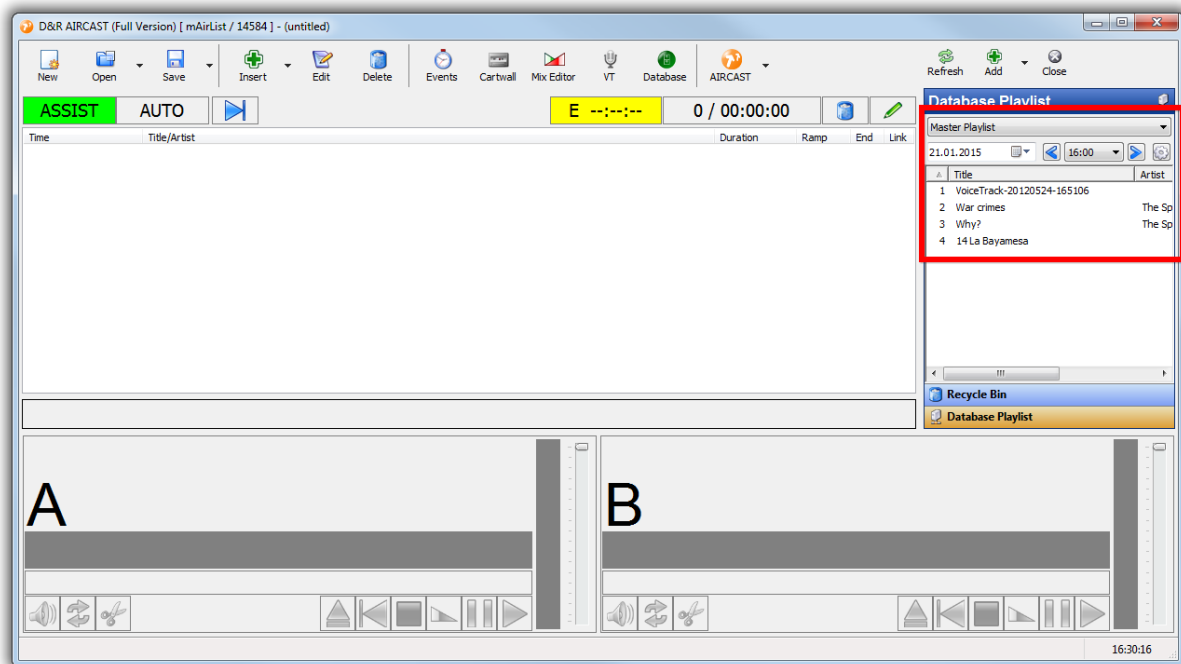
- Database playlist:

This request fits into the existing "playlist editor" concept built into AIRCAST DB.

- Preparator workflow: Open AIRCAST DB app, go to Playlist tab, then navigate to the date/time of the show being prepared. Click "Import" to load the playlist file from the external music scheduler. Playlist will be presented in the editor, see attached screenshot aircastdb1.png. Edit as required, then click Save - playlist will be stored for that date/time inside the SQL database.

- DJ workflow: Open "Database Playlist" tab in the browser, navigate to the date/time, playlist will be displayed, click the small "gear" button and use menu to load into broadcast playlist. (aircastdb2.png)





Some notes:

- Even though AIRCAST DB use a 24x7 hour grid, you can put as many content as you like into one playlist, and leave others empty, so if you have a two-hour show, you can just put anything into the 1st hour and leave the second one empty.

- There can be more than one playlist scheduled per hour - look at the tabs above the playlist editor in aircastdb1.png, "Master Playlist" and "Test". We call these "sub-playlists", and they can be set up under Administration -> Configuration -> Sub-Playlists. You can use these e.g. to have the main rundown playlist in the "Master Playlist" tab, and use the sub-playlist for some special audio elements scheduled manually by the DJ.

- You can manage more than one station within a single AIRCAST DB. Go to Administration -> Configuration -> Stations and add as many as you like.

The play-out instance is tight to one station (AIRCAST Configuration -> Database -> Configure -> Settings -> Default Station), so as the DJ, you can only access the station that the particular studio is set to, even if you open the Database app from the green button in the play-out toolbar. But if you run the Database as a separate application from the Windows Start Menu, you get a new menu "Station" where you can switch between stations (visible in aircastdb1.png).

- If you want some extra metadata fields that go with each playlist, go to Administration -> Configuration -> Playlist Attributes and set up the required fields, e.g. title of the show or name of the editing person. After a restart, you can click the "Edit Attributes" button in the playlist editor and enter the data.

I think the main difference between AIRCAST and other systems in this respect is that AIRCAST presents a fixed hourly date+time grid with hourly alignment, while in other systems you manually create a playlist for a particular date+time, and then open it in the playlist editor.

This might change in a future version. Right now we have this hourly grid.